

MASTER PLAN



WING 1

TYPE	CARPET AREA	BUILT UP AREA	SALEABLE AREA
5 BHK-A	2762 SQ. FT.	3841 SQ. FT.	5185 SQ. FT.
4 BHK-A	2105 SQ. FT.	2456 SQ. FT.	3316 SQ. FT.
4 BHK-B	2038 SQ. FT.	2506 SQ. FT.	3383 SQ. FT.

WING 3

TYPE	CARPET AREA	BUILT UP AREA	SALEABLE AREA
4 BHK-A	2105 SQ. FT.	2456 SQ. FT.	3316 SQ. FT.
5 BHK-B	2762 SQ. FT.	3841 SQ. FT.	5185 SQ. FT.
4 BHK-C	2070 SQ. FT.	2538 SQ. FT.	3426 SQ. FT.

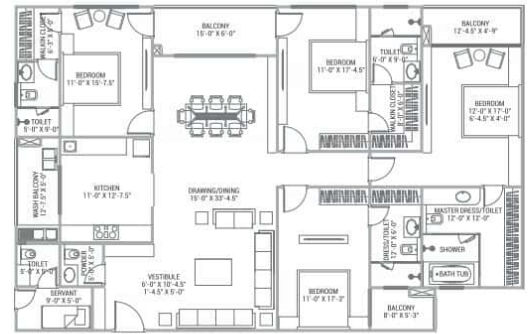
WING 2

TYPE	CARPET AREA	BUILT UP AREA	SALEABLE AREA
3 BHK-A	1669 SQ. FT.	1956 SQ. FT.	2641 SQ. FT.
3 BHK-B	1431 SQ. FT.	1757 SQ. FT.	2372 SQ. FT.
3 BHK-C	1670 SQ. FT.	1954 SQ. FT.	2638 SQ. FT.
4 BHK-D	2150 SQ. FT.	2513 SQ. FT.	3393 SQ. FT.
4 BHK-E	2153 SQ. FT.	2513 SQ. FT.	3393 SQ. FT.



4 BHK UNIT PLAN

4 BHK-A (WING 1 & 3) | FLAT NO. 102-1202 & 110-1210 | CRPT AR - 2105 SQ.FT. | B.U.A - 2456 SQ. FT. | S.B.U.A - 3316 SQ. FT.



KEY PLAN



4 BHK UNIT PLAN

4 BHK- B (WING 1) | FLAT NO. 103-1203 | CRPT AR - 2038 SQ. FT. | B.U.A - 2506 SQ. FT. | S.B.U.A - 3383 SQ. FT.

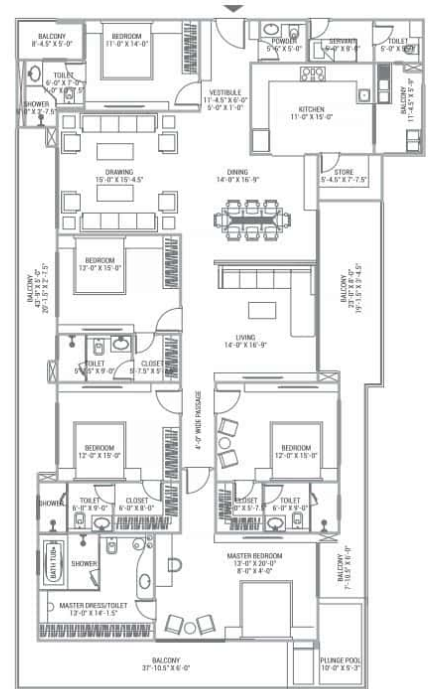


KEY PLAN



5 BHK UNIT PLAN

5 BHK- A & B (WING 1 & 3) | FLAT NO. 101-1201 & 111-1211 | CRPT AR - 2762 SQ. FT. | B.U.A - 3841 SQ. FT. | S.B.U.A - 5185 SQ. FT.



KEY PLAN



3 BHK UNIT PLAN

3 BHK- A & C (WIND 2) | FLAT NO. 104-1204/106-1206 | CRPT AR - 1669/1670 SQ. FT. | B.U.A - 1956/1954 SQ. FT. | S.B.U.A - 2641/2638 SQ. FT.

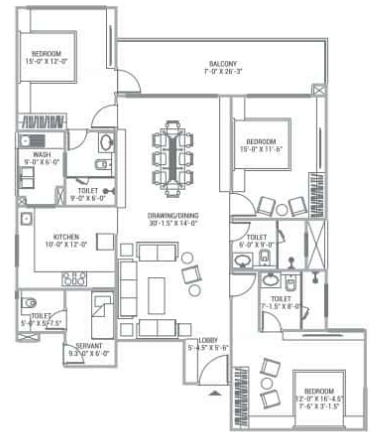


KEY PLAN



3 BHK UNIT PLAN

3 BHK- B (WIND 2) | FLAT NO. 105-1205 | CRPT AR - 1431 SQ. FT. | B.U.A - 1757 SQ. FT. | S.B.U.A - 2372 SQ. FT.

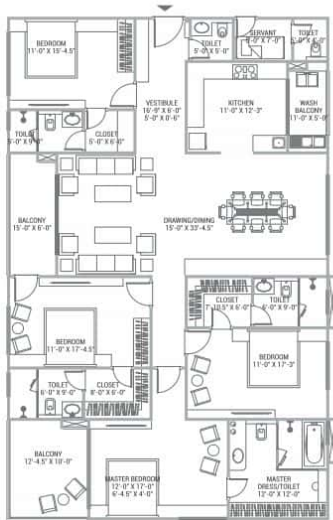


KEY PLAN



4 BHK UNIT PLAN

4 BHK- D (WING 2) | FLAT NO. 208-1408 | CRPT AR - 2150 SQ. FT. | B.U.A - 2513 SQ. FT. | S.B.U.A - 3393 SQ. FT.



KEY PLAN



4 BHK UNIT PLAN

4 BHK- E (WING 2) | FLAT NO. 207-1407 | CRPT AR - 2153 SQ. FT. | B.U.A - 2513 SQ. FT. | S.B.U.A - 3393 SQ. FT.

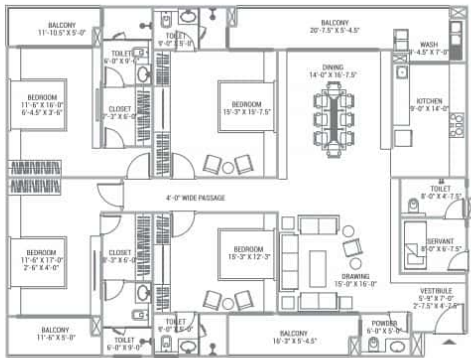


KEY PLAN



4 BHK UNIT PLAN

4 BHK- C (WING 3) | FLAT NO, 109-1209 | CRPT AR - 2070 SQ. FT. | B.U.A - 2538 SQ. FT. | S.B.U.A - 3426 SQ. FT.



KEY PLAN



SPECIFICATIONS

DRAWING/DINING

- IMPORTED MARBLE FLOORING
- DESIGNER DOOR SHUTTER WITH DOOR FRAME AT MAIN ENTRANCE OR EQUIVALENT
- EURO PROFILE ALUMINIUM WINDOWS WITH TWO TRACK SYSTEM
- ACRYLIC EMULSION PAINT ON ALL INTERNAL WALL & CEILING
- HIGH-END ELECTRICAL SWITCHES OF INTERNATIONAL MAKE .

MASTER BEDROOM

- IMPORTED MARBLE FLOORING
- VENEERED / LAMINATED FLUSH DOOR WITH DOOR FRAME
- EURO PROFILE ALUMINIUM WINDOWS WITH TWO TRACK SYSTEM
- ACRYLIC EMULSION PAINT ON ALL INTERNAL WALL & CEILING
- HIGH-END ELECTRICAL SWITCHES OF INTERNATIONAL MAKE .

OTHER BEDROOM

- WOODEN FLOORING OR VITRIFIED TILES
- VENEERED / LAMINATED FLUSH DOOR WITH DOOR FRAME
- EURO PROFILE ALUMINIUM WINDOWS WITH TWO TRACK SYSTEM
- ACRYLIC EMULSION PAINT ON ALL INTERNAL WALL & CEILING
- HIGH-END ELECTRICAL SWITCHES OF INTERNATIONAL MAKE .

MASTER TOILET

- WALL CLADDING UP TO CEILING
- IMPORTED MARBLE FLOORING
- VENEERED / LAMINATED FLUSH DOOR WITH DOOR FRAME OR EQUIVALENT
- COUNTER BASIN WITH IMPORTED MARBLE TOP
- WET AREA WITH GLASS PARTITION
- HAND SHOWER & HEAD SHOWER
- PROVISION FOR GEYSER, EXHAUST FAN
- C P FITTINGS OF INTERNATIONAL BRAND.
- SANITARY WARE OF INTERNATIONAL BRAND.
- GRID FALSE CEILING

OTHER BEDROOM TOILETS

- WALL CLADDING UP TO CEILING
- ANTI SKID TILES FOR FLOORING
- VENEERED / LAMINATED FLUSH DOOR WITH DOOR FRAME OR EQUIVALENT
- COUNTER BASIN WITH GRANITE TOP
- WET AREA WITH GLASS PARTITION
- PROVISION FOR GEYSER, EXHAUST FAN
- C P FITTINGS OF INTERNATIONAL BRAND.
- SANITARY WARE OF INTERNATIONAL BRAND.
- GRID FALSE CEILING

KITCHEN

- FULLY MODULER KITCHEN
- ITALIAN MARBLE
- EURO PROFILE ALUMINIUM WINDOWS WITH TWO TRACK SYSTEM
- GRANITE COUNTER TOP
- HIGH-END ELECTRICAL SWITCHES OF INTERNATIONAL MAKE .
- GAS PIPE LINE AND GAS DETECTOR
- PROVISION FOR GEYSER, EXHAUST FAN & R.O. UNIT
- WASHING MACHINE POINT IN UTILITY AREA

BALCONY & TERRACES

- ANTI SKID TILES FOR FLOORING
- FRAMELESS GLASS RAILING WITH S.S. TOP

AIR CONDITIONING

- COPPER PIPING & CABLING FOR AIR CONDITIONERS



COMMON AREAS DESIGNED BY STUDIO HBA

FLAT INTERIORS DESIGNED BY STUDIO HBA FOR ONE OF THE RESIDENTS AT THE CREST

RERA No. RAJ/A/2017/038



Happy to help you!

Contact for more details

 www.keys90.com

 info@keys90.com

 7742821000, 9166329090

